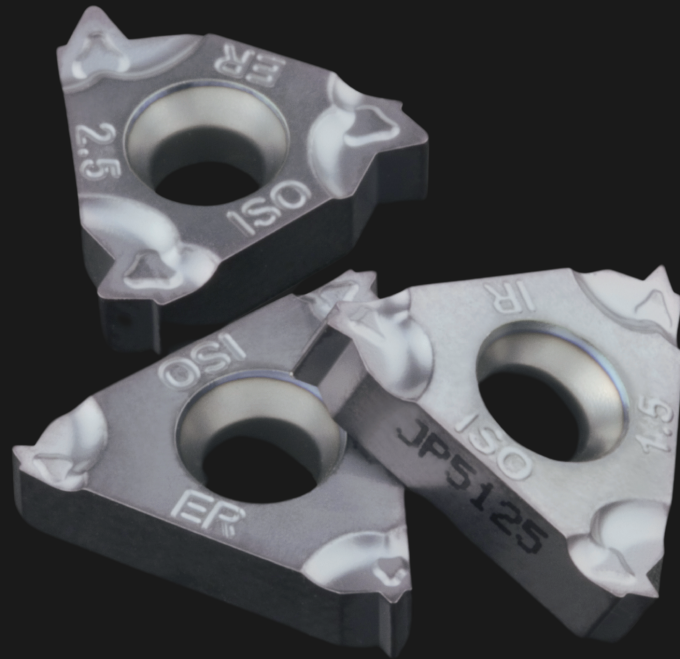


TPM

get more, gain more



75 SORMA
ANNIVERSARY · 1950-2025

nikkoTOOLS
SORMA CUTTING SOLUTIONS

uemme
TOOLS and EQUIPMENT

Cliente:

Note:

Sconto 55%

Acquista il kit da
2 inserti a € 13,59
anziché € 30,20!



Vantaggi extra:

40 inserti TPM - sconto extra 10%

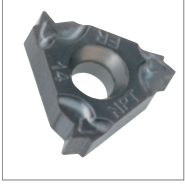
Acquista 20 kit misti per ottenere uno
sconto aggiuntivo del 10%!

100 inserti TPM - sconto extra 15%

Acquista 50 kit misti per ottenere uno
sconto aggiuntivo del 15%!

Offerta valida fino al 30/04/2025

Perché scegliere TPM per filettatura?



Tecnologia di stampa innovativa per ottenere inserti con elevata precisione e taglienti particolarmente performanti

Il grado JP5125 combinato alla geometria TPM consente di ottenere prestazioni eccezionali su applicazioni ISO **P**, **M**, **K**, **S**.



METRICO

CODICE KIT 2 INSERTI	DESCRIZIONE	INSERTO	INT/EST	TIPOLOGIA	GRADI	PASSO	ORDINE
2PACK-NT601303	11IR100ISO-TPM JP5125	11	INT	metrico	60°	1,00	
2PACK-NT601304	11IR125ISO-TPM JP5125	11	INT	metrico	60°	1,25	
2PACK-NT601305	11IR150ISO-TPM JP5125	11	INT	metrico	60°	1,50	
2PACK-NT601306	11IR175ISO-TPM JP5125	11	INT	metrico	60°	1,75	
2PACK-NT601307	11IR200ISO-TPM JP5125	11	INT	metrico	60°	2,00	
2PACK-NT601515	11IRA60-TPM JP5125	11	INT	metrico	60° var	0,5 - 1,5	
2PACK-NT600992	16IR100ISO-TPM JP5125	16	INT	metrico	60°	1,00	
2PACK-NT601031	16IR125ISO-TPM JP5125	16	INT	metrico	60°	1,25	
2PACK-NT600993	16IR150ISO-TPM JP5125	16	INT	metrico	60°	1,50	
2PACK-NT601033	16IR175ISO-TPM JP5125	16	INT	metrico	60°	1,75	
2PACK-NT600994	16IR200ISO-TPM JP5125	16	INT	metrico	60°	2,00	
2PACK-NT601035	16IR250ISO-TPM JP5125	16	INT	metrico	60°	2,50	
2PACK-NT601036	16IR300ISO-TPM JP5125	16	INT	metrico	60°	3,00	
2PACK-NT600987	16ER100ISO-TPM JP5125	16	EST	metrico	60°	1,00	
2PACK-NT600988	16ER125ISO-TPM JP5125	16	EST	metrico	60°	1,25	
2PACK-NT600989	16ER150ISO-TPM JP5125	16	EST	metrico	60°	1,50	
2PACK-NT601027	16ER175ISO-TPM JP5125	16	EST	metrico	60°	1,75	
2PACK-NT600990	16ER200ISO-TPM JP5125	16	EST	metrico	60°	2,00	
2PACK-NT600991	16ER250ISO-TPM JP5125	16	EST	metrico	60°	2,50	
2PACK-NT601029	16ER300ISO-TPM JP5125	16	EST	metrico	60°	3,00	
2PACK-NT601300	16IRA60-TPM JP5125	16	INT	metrico	60° var	0,5 - 1,5	
2PACK-NT601227	16IRAG60-TPM JP5125	16	INT	metrico	60° var	0,5 - 3	
2PACK-NT601302	16IRG60-TPM JP5125	16	INT	metrico	60° var	1,75 - 3	
2PACK-NT601296	16ERA60-TPM JP5125	16	EST	metrico	60° var	0,5 - 1,5	
2PACK-NT601226	16ERAG60-TPM JP5125	16	EST	metrico	60° var	0,5 - 3	
2PACK-NT601298	16ERG60-TPM JP5125	16	EST	metrico	60° var	1,75 - 3	

UN

CODICE KIT 2 INSERTI	DESCRIZIONE	INSERTO	INT/EST	TIPOLOGIA	GRADI	PASSO	ORDINE
2PACK-NT601312	16ER08UN-TPM JP5125	16	EST	UN	60°	8	
2PACK-NT601248	16ER12UN-TPM JP5125	16	EST	UN	60°	12	
2PACK-NT601249	16ER14UN-TPM JP5125	16	EST	UN	60°	14	
2PACK-NT601313	16ER16UN-TPM JP5125	16	EST	UN	60°	16	
2PACK-NT601314	16ER18UN-TPM JP5125	16	EST	UN	60°	18	
2PACK-NT601315	16ER20UN-TPM JP5125	16	EST	UN	60°	20	
2PACK-NT601310	16ER24UN-TPM JP5125	16	EST	UN	60°	24	
2PACK-NT601316	16IR08UN-TPM JP5125	16	INT	UN	60°	8	
2PACK-NT601250	16IR12UN-TPM JP5125	16	INT	UN	60°	12	
2PACK-NT601251	16IR14UN-TPM JP5125	16	INT	UN	60°	14	
2PACK-NT601317	16IR16UN-TPM JP5125	16	INT	UN	60°	16	
2PACK-NT601318	16IR18UN-TPM JP5125	16	INT	UN	60°	18	
2PACK-NT601319	16IR20UN-TPM JP5125	16	INT	UN	60°	20	
2PACK-NT601311	16IR24UN-TPM JP5125	16	INT	UN	60°	24	



NPT

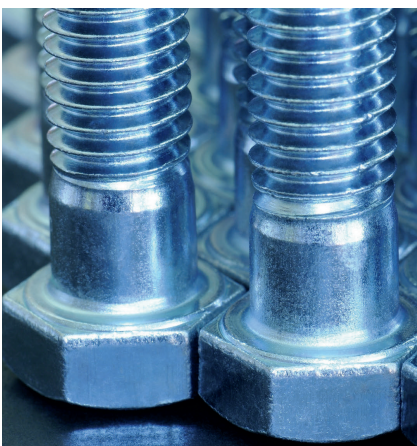
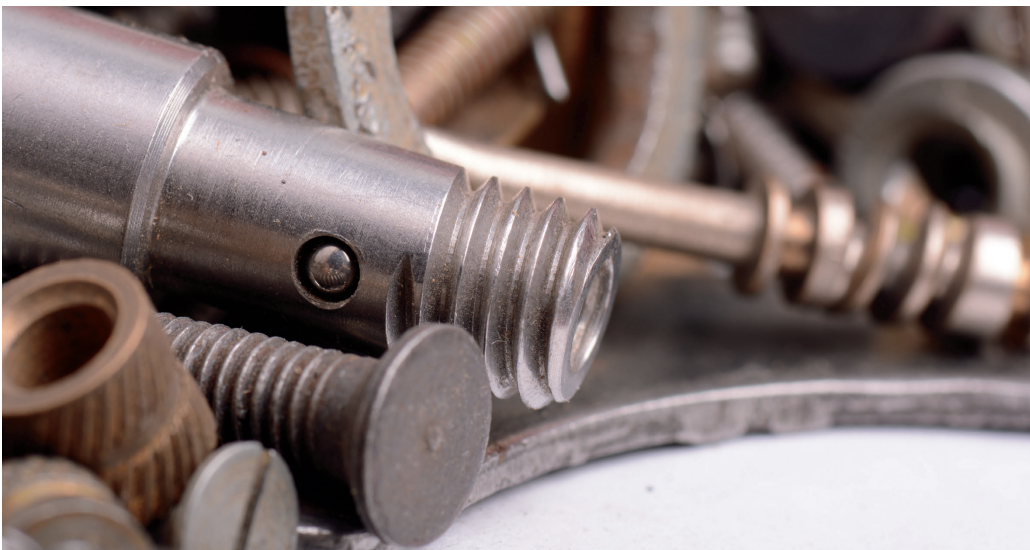
CODICE KIT 2 INSERTI	DESCRIZIONE	INSERTO	INT/EST	TIPOLOGIA	GRADI	PASSO	ORDINE
2PACK-NT601234	16ER11.5NPT-TPM JP5125	16	EST	NPT	60°	11,5	
2PACK-NT601236	16ER18NPT-TPM JP5125	16	EST	NPT	60°	18	
2PACK-NT601235	16ER14NPT-TPM JP5125	16	EST	NPT	60°	14	
2PACK-NT601237	16IR11.5NPT-TPM JP5125	16	INT	NPT	60°	11,5	
2PACK-NT601238	16IR14NPT-TPM JP5125	16	INT	NPT	60°	14	

BSW - GAS

CODICE KIT 2 INSERTI	DESCRIZIONE	INSERTO	INT/EST	TIPOLOGIA	GRADI	PASSO	ORDINE
2PACK-NT602140	11IR14W-TPM JP5125	11	INT	Whitworth - GAS	55°	14	
2PACK-NT601030	16IR11W-TPM JP5125	16	INT	Whitworth - GAS	55°	11	
2PACK-NT601032	16IR14W-TPM JP5125	16	INT	Whitworth - GAS	55°	14	
2PACK-NT601034	16IR19W-TPM JP5125	16	INT	Whitworth - GAS	55°	19	
2PACK-NT601025	16ER11W-TPM JP5125	16	EST	Whitworth - GAS	55°	11	
2PACK-NT601026	16ER14W-TPM JP5125	16	EST	Whitworth - GAS	55°	14	
2PACK-NT601028	16ER19W-TPM JP5125	16	EST	Whitworth - GAS	55°	19	
2PACK-NT601516	11IRA55-TPM JP5125	11	INT	Whitworth - GAS	55° var	48 - 16	
2PACK-NT601299	16IRA55-TPM JP5125	16	INT	Whitworth - GAS	55° var	48 - 16	
2PACK-NT601253	16IRAG55-TPM JP5125	16	INT	Whitworth - GAS	55° var	48 - 8	
2PACK-NT601301	16IRG55-TPM JP5125	16	INT	Whitworth - GAS	55° var	14 - 8	
2PACK-NT601295	16ERA55-TPM JP5125	16	EST	Whitworth - GAS	55° var	48 - 16	
2PACK-NT601252	16ERAG55-TPM JP5125	16	EST	Whitworth - GAS	55° var	48 - 8	
2PACK-NT601297	16ERG55-TPM JP5125	16	EST	Whitworth - GAS	55° var	14 - 8	

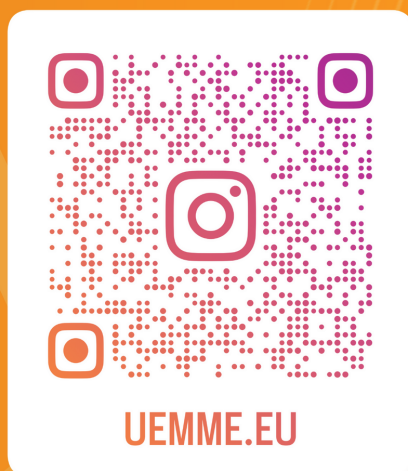
BSPT - GAS CON - RC

CODICE KIT 2 INSERTI	DESCRIZIONE	INSERTO	INT/EST	TIPOLOGIA	GRADI	PASSO	ORDINE
2PACK-NT601240	16ER11BSPT-TPM JP5125	16	EST	BSPT - GAS CON - RC	55°	11	
2PACK-NT601241	16ER14BSPT-TPM JP5125	16	EST	BSPT - GAS CON - RC	55°	14	
2PACK-NT601242	16ER19BSPT-TPM JP5125	16	EST	BSPT - GAS CON - RC	55°	19	
2PACK-NT601243	16ER28BSPT-TPM JP5125	16	EST	BSPT - GAS CON - RC	55°	28	
2PACK-NT601244	16IR11BSPT-TPM JP5125	16	INT	BSPT - GAS CON - RC	55°	11	
2PACK-NT601245	16IR14BSPT-TPM JP5125	16	INT	BSPT - GAS CON - RC	55°	14	
2PACK-NT601246	16IR19BSPT-TPM JP5125	16	INT	BSPT - GAS CON - RC	55°	19	



Unisciti
alla
community!
Segui
@uemme.eu
su Instagram

Segui



uemme s.r.l.

Viale Lavoro e Industria
25030 Coccaglio (BS)
ITALIA

contatti

T | +39 030 7700112
M | info@uemme.eu
S | www.uemme.eu

follow us

